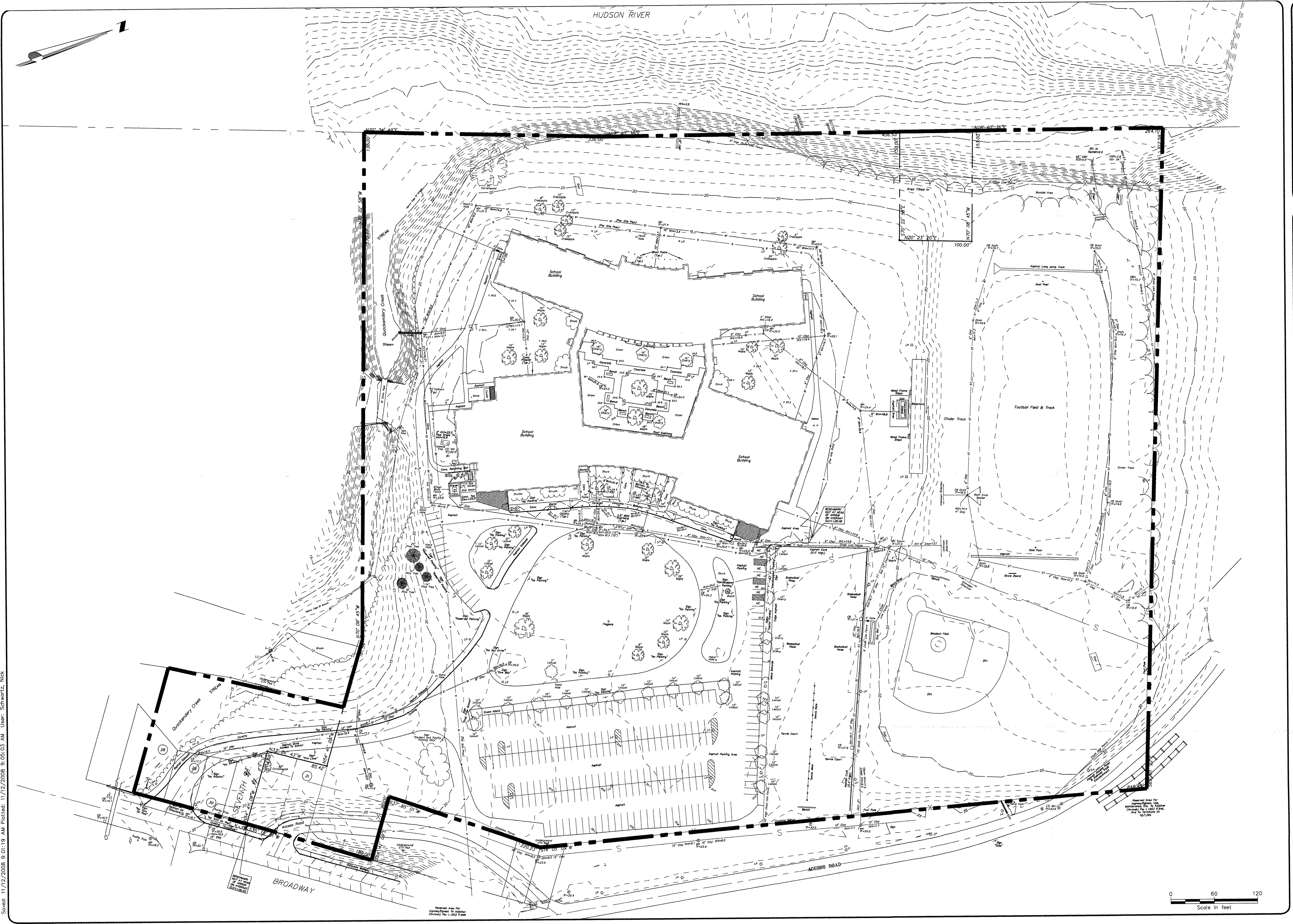
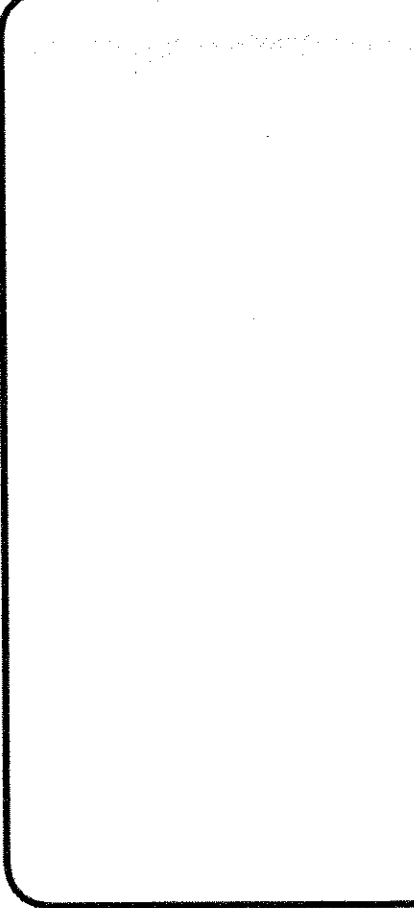


File: K:\170831\CAD\FIGURES\GENERAL\EXISTING_TOPOGRAPHY.DWG
Saved: 11/21/2008 9:01:19 AM Plotted: 11/21/2008 9:05:03 AM User: Schwartz, Nick



No.	Submital / Revision	App'd By	Date



UNAUTHORIZED ALTERATION OR ADDITION TO THIS DOCUMENT IS A VIOLATION OF THE PROFESSIONAL SEAL OF THE ENGINEER.

Design Copyright © 2008 Clough Harbour & Associates, LLP
CHA
CLOUGH HARBOUR & ASSOCIATES, LLP
111 Wilton, Circle, PO Box 5288 - Albany, NY 12205-0288
Main: (518) 452-4500 • www.cloughharbour.com

EXISTING TOPOGRAPHY
CITY OF RENSSELAER
RENSSELAER COUNTY, NEW YORK

FIGURE 4